



DAIMON

EXCLUSIVE WALLCOVERINGS

DAIMON

“Essence is neither a place nor a time, an insight or a state of mind. It is the deepest part of our nature, an actual presence that is innate and inborn. Sometimes it wears a personal face and a form and manifests as an image to our mind’s eye. When it does, some call it a Daimon; others an angel. In its incorporeal form, still others think of it as the soul.”

Jean Houston

The new wallpaper collection, Daimon embodies a journey through alluring, yet heartfelt themes of the natural, both real and imagined.

All of Daimon’s seven hand drawn patterns are inspired by an idea of a paradisaical Renaissance garden in which yearning souls of the present could find rest. It is a place where our imagination can flow within the compounds of sophistication, novelty and unconventional creativity. A type of sanctuary that could provide us with a sense of protection, intrigue and inner creativity.

The Daimon collection boasts an array of wonderfully indulgent designs as diverse as the Bristlecone wood patterns and rambling flora seemingly bursting onto a wall. The graphic and geometric patterns, Linnen and Splendour, fuse the room by its wrappings of lines and sophisticated designs.

Each creation tells its own story. Dusty and saturated colors create subtle aesthetics that deliver a feeling of nostalgia and cosines. The Daimon collection has the ability to transform even the simplest of spaces into creative arenas of elegance and expressiveness. A place where imagination of its residents collides with equanimity, becoming entirely captivated by magic as if a spell was rendered in order to have a storybook effect.

BREEZE



Breeze brings forth a sense of spring like delight vis-a-vis its delicate pattern that wraps the room in an invigorating and calming space. The combination of just two balmy colours give the design an ambience of harmony with lush greenery, making a dashing impression without being dominating.

This wallpaper is perfect as a subtle background for all rooms as well as a combination with other bold patterned designs from the Daimon collection.

BRISTLECONE WOODS

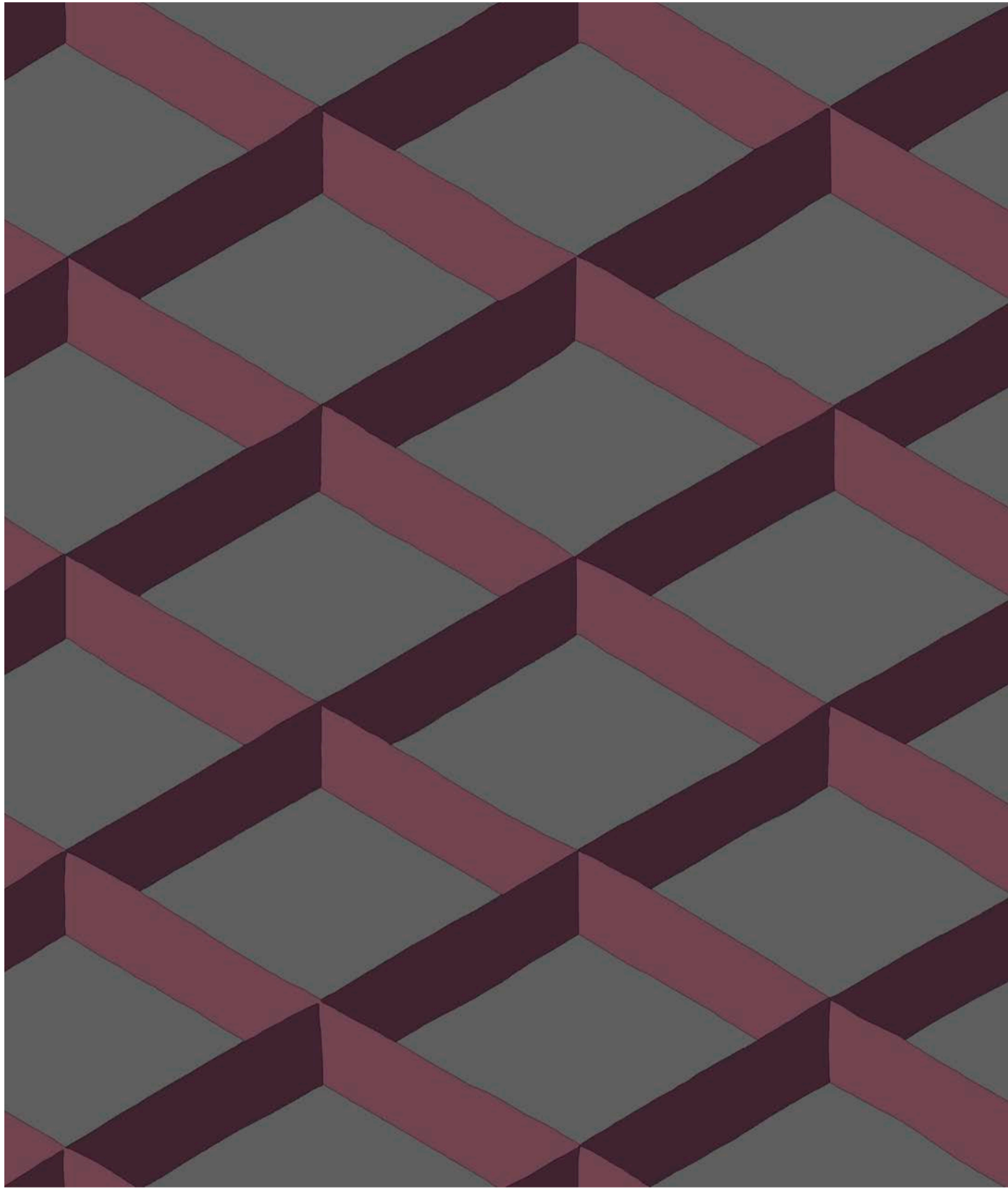


Bristlecone Woods depicts scattered woodland islands create a both daring but soft pattern full of vigour. Inspired by the magnificent paradisal summer night at Giardini di Villa Borghese in Rome wherein ancient soaring umbrella pine trees reach the sky in company of the fireflies and an orchestra of cicadas.

The story behind this wallpaper is one of beauty and enthusiasm, the reminiscent of a waving summer meadow. Printed trees evoke a mysterious feeling making this wallpaper rich in detail yet still suitable for the minimalist. Bristlecone Woods comes in four different colour schemes.

The shown above comes in a rich green colour with violet trees, and a dark background that gives the room a particularly cosy feel.

LINNEN



Linnen's modern and elegant look is ideal for a unique feature wall in a contemporary setting. Inspired by the interiors of Pitti palace in Florence and Renaissance aesthetics, Linnen radiates with luxurious simplicity, adding attitude and edge to the ambience of any room. It is presented here in a wonderful dark burgundy and grey combination of colour.

EUCALYPTUS



Eucalyptus' stylised leaves shown in fields of light and shade, create an elegant and organic setting. The pattern dressed in seams of leaves floating across the wall brings forth an experience as if the observer is watching the nature dance against the sky all while feeling the breeze on the one's skin.

Wallpaper's rich structure creates a soft and luxurious touch.

All available five contemporary colour schemes fit perfectly in any modern home conveying a warm and personal touch to its audience.

OASIS



Oasis is an expressive and colourful wallpaper boasting a botanical theme via its lush flowers and highland avifauna. This playful pattern is inspired by motif of a vintage 18th century wallpaper. The branches and exotic birds wind their way up the wall, creating a harmonious rhythm, while their fresh colours add beauty to both large and small rooms.

Oasis provides a room with unequalled sinuous floral beauty with an air of eccentric and exotic luxury. It is suitable for most rooms, especially as a feature wall or the powder room.

SPLENDOUR



Inspired by ancient Roman architecture and symmetrical Renaissance gardens, Splendour's geometrical pattern evokes the room's elegant character. With its simple yet contemporary effect, the circles in Splendour strive upwards, creating a masculine and maxed expression.

Splendour can be easily
combined with other wallpapers from the Daimon collection.

THE GARDEN OF DAIMON



The Garden of Daimon is a wall mural inspired by the magnificent and intriguing Boboli Gardens of the city of Florence. This digitally-printed wallpaper is a beautiful fantasy oasis in its full bloom. Garden's bamboo trees are reaching high up to the sky in a cascade of parasidial flowers.

The Garden of Daimon has the power to completely transform any interior. It offers perspective and depth while giving the room a bewildering dreamy feel that creates an illusion of panoramic vistas through its unique abundant flora. Imagined as a feature wall, and it can be also used to perfectly decorate an entire hallway giving a unique and magical feeling to spaces both large and small.